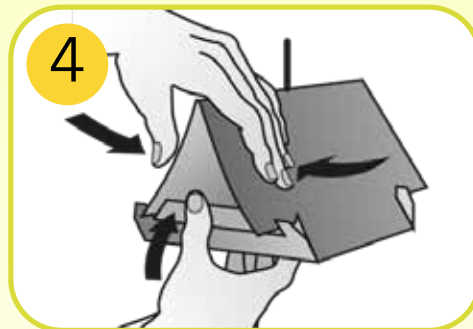
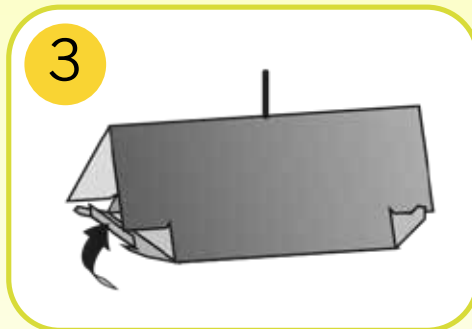
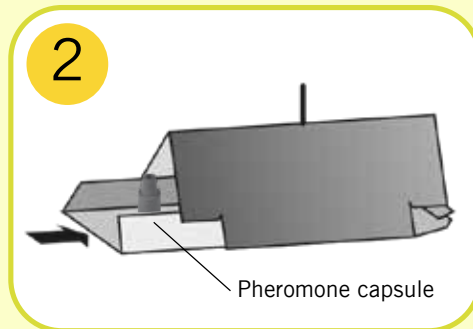
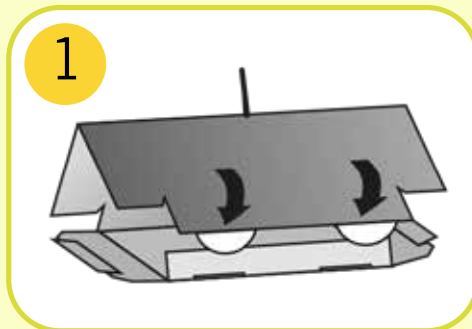


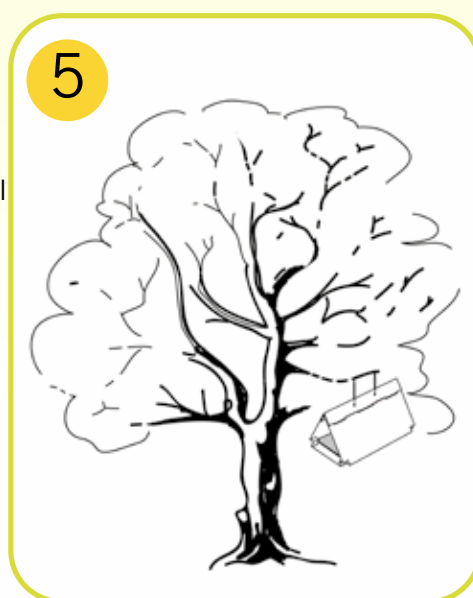
# WitaTrap® Complete Box Tree Moth Trap Set

Assembly of the WitaTrap® Delta Super Trap:



Assembly:

- 1 Fold the trap body together and insert the fastening tabs sideways through the provided slits.
- 2 Remove the adhesive base from the foil and pull off the protective film. Remove the pheromone capsule from the aluminium sachet and place it in the centre of the adhesive base. Now insert the adhesive base with pheromone (attractant) with the glued surface upwards into the body of the trap.
- 3 Fold the lateral flaps of the trap upwards and insert them in the provided slits to ensure that the adhesive base cannot fall out.
- 4 Attach the suspension wire to the provided hole and hang the completed trap in accordance with instructions. (See inside page)



Contents: **One trap set**

consisting of: 1 trap body (WitaTrap® Delta Super Trap), 2 adhesive bases (separately packaged!), 2 pheromone capsules (separately packaged!), 1 suspension wire for mounting and detailed instructions for use.

Art. No.: 362061



**We have other trap sets available! Let us know your needs!**

[www.witasek.com](http://www.witasek.com)

**witasek®** Witasek-Allee 2 • 9560 Feldkirchen/Austria • Tel.: +43 (0) 4276 / 3230  
Fax: +43 (0) 4276 / 2088-399 • office@witasek.com • [www.witasek.com](http://www.witasek.com)

LEGAL NOTICE: Publisher responsible for contents: witasek PflanzenSchutz GmbH. Great care has been exercised in providing information. We can accept no liability for misprints and other errors. Contents may be subject to change without notice. Our general terms of supply and payment apply. To view our GTCs, go to [www.witasek.com](http://www.witasek.com)



## WitaTrap® Complete Box Tree Moth Trap Set



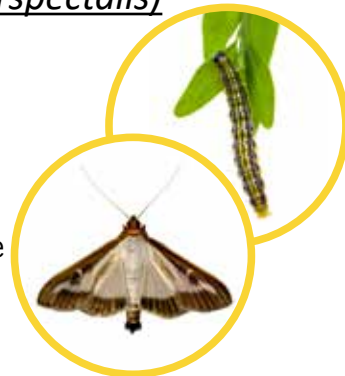
Box tree moth (*Cydalima perspectalis*)

Biological  
attractant trap  
(pheromone trap)  
for the management of  
pest infestation  
of your cultivars.



► See inside for more information

## Box tree moth (*Cydalima perspectalis*)



Pest: Box tree moth  
 Scientific name: *Cydalima perspectalis*  
 Infests: various species of box tree

### Main symptoms of infestation:

- Signs of damage to and light beige discolouration of leaves
- Bright green faecal particles caught in webs and under trees
- Webs become clearly visible if there is severe infestation

### Biology:

The larvae spin webs between leaves and overwinter here in the trees. In spring, when temperatures rise to above 7°C for longer periods, the caterpillars start to eat again.

In general they pass through six larval stages before they enter pupation. This has a duration of some 10 weeks at temperatures of around 15°C; at temperatures of 25 - 30°C, these stages can be completed in only 3 weeks. After the roughly week-long pupation phase in summer, the adult moths emerge. These are active at night.

The females live for about 8 days, during which they lay their eggs on the underside of leaves. If climatic conditions are suitable, a second and even third generation can develop each year.

Egg deposition: each female lays some 100 - 150 eggs

Caterpillar stage (pest phase): approx. 10 weeks at 15°C  
 approx. 3 weeks at 25 - 30°C

Lifespan of adult moths: approx. 8 - 9 days

Flight period: at dusk

The caterpillars of the previous year's months overwinter in box trees and begin to eat again in spring of the following year.



First appearance of caterpillars: mid-March/early April  
 → use insecticide if necessary

First generation flight periods: early June → set traps\*

Second appearance of caterpillars: mid- to late July  
 → use insecticide if necessary

Second generation flight periods: August/September  
 → set traps\*

Third appearance of caterpillars: September/October  
 → use insecticide if necessary

**\*PLEASE NOTE: Traps must be put in place before the moths take flight. The traps capture only the male moths.**

The use of pheromone traps is an excellent way of controlling levels of flying pest insects and beetles.

### Purpose of pheromone traps:

- They are used to monitor levels of infestation and to determine when adults are taking flight. Further suitable targeted measures (biological or standard plant protection methods) can then be initiated as necessary.
- Reduction of numbers of pest insects.

### Use:

Assemble the trap and hang it using the suspension wire from a branch or post. (See other side for assembly instructions)

In order to avoid attracting the pest insects directly to the box tree to be protected, hang the trap from another tree (that is not a box tree) in the vicinity. If this is not possible, the trap can also be hung from a suitably high post driven into the ground.

Hang the trap at eye level to ground level, depending on height of the tree, between the main wind direction and the tree. Make sure the trap entrances are not blocked by twigs and leaves.

Each trap should be checked at regular intervals of 2 - 3 days. Each time a trap is checked, the insects sticking to the adhesive base should be removed using a suitable tool (e.g. twig or wooden scraper) to ensure that the full glue surface is revealed. If the base becomes very soiled, replace it or spray with a liquid glue, such as Soveurode special glue.

Replace the attractant capsule and the adhesive base if necessary roughly every 4 - 6 weeks.

**\*Traps should be put in place before the flight phase of the adults.**

### Storage:

Store the pheromones prior to use in the original packaging in a cold place (e.g. refrigerator or freezer compartment) at a maximum temperature of +4°C (no risk to foodstuffs).

### Disposal:

Used traps can be disposed of with domestic waste.



Period of use\*

### Trap set

Art. No.	Product
362061	WitaTrap® Complete Box Tree Moth Trap Set ( <i>Cydalima perspectalis</i> )

### Reconditioning

If adhesive bases collect too many insects and become badly soiled, these should be replaced or resprayed with a liquid glue, such as Soveurode special glue. Additional adhesive bases can be separately ordered.

Art. No.	Product
391111	Adhesive base for the WitaTrap® Delta Super - pack of two bases
381211	Soveurode special glue (sprayable glue)

Orders can be placed by phone, fax or email.

Tel.: +43 (0)4276/ 3230 | Fax: +43 (0) 4276/ 2088-399 | Email: office@witasek.com